

museenkoeln

www.museenkoeln.de

SEPTEMBER 2014 – MARCH 2015

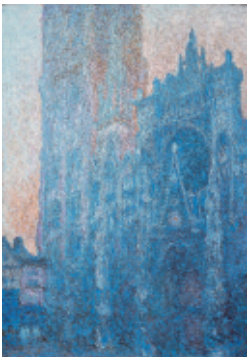
Exhibitions

Obenmarspforten, 50667 Köln
 Tel.: +49 (0) 221 221 - 21119
 Fax: +49 (0) 221 221 - 22629
 info@wallraf.museum
 www.wallraf.museum

Tuesday to Sunday 10 a.m. – 6 p.m.
 Thursday 10 a.m. – 9 p.m.
 first Thursday of the month 10 a.m. – 10 p.m.

Public tours: Wednesday 4.30 p.m.,
 Sunday 11.30 a.m., 3 p.m.
 See Museumsdienst (Educational service)
 for group guided tours
 Bus: Rathaus or Gürzenich, tram: Heumarkt

Western painting from the 13th to the 19th century. Early Cologne panel painting; Dutch and Old German panel painting from the late Middle Ages and the Renaissance; 17th century Flemish and Dutch painting, Italian and Spanish baroque painting, 19th century painting, including German Romanticism, German and French Realism and Impressionism. 19th century sculpture. Miniatures, drawings and prints.



Claude Monet,
Rouen cathedral. The portal. 1894, oil on canvas
 Fondation Beyeler,
 Sammlung Beyeler,
 Riehen/Basel

29 August to 23 November 2014

Counterproof. An Art in Itself

One of the allegedly “poor” relatives in any graphic collection is the counterproof. One simply placed a lightly dampened sheet of paper on the original drawing and, with just a light press and no other intervention, received a counterproof. The Wallraf has dedicated a special exhibition exclusively to this method, which explores the artistic beauty and the various functions of the counterproof. Is it just a trivial repetition, or is it in fact an original?

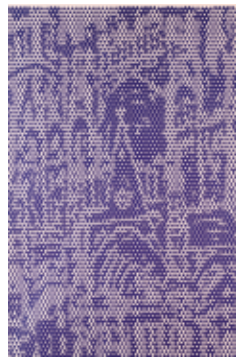
26 September 2014 to 18 January 2015

THE KATHEDRAL

Romanticism – Impressionism – Modernism

Caspar David Friedrich did it, just as Alfred Sisley and Auguste Rodin did; Claude Monet managed it all of 33 times. And the same is true of Matisse, Feininger, Ernst, Picasso, Warhol and Gursky, to name just the most famous artists. They all let themselves be inspired by the grace, the radiance and majesty of famous cathedrals to produce wonderful works. The fascinating path this motif has taken from the Romantics to the present day will be traced out at the Wallraf. In a major special exhibition, “The Cathedral”, the Cologne museum presents more than 180 exhibits that all explore that most monumental of mediaeval buildings. Included are four of the works in which Monet immortalised Rouen cathedral.

Using the example of the cathedral, the exhibition takes the visitor through a number of the most intriguing chapters of art history. But it will not simply show a wealth of interpretations from various epochs, but also point out surprising connections between the prominent artists themselves, while clarifying their personal aims, views and motivations.



Roy Lichtenstein,
Rouen Cathedral 5, 1970, Lithographie,
 Museum Ludwig,
 Köln,
 Foto: RBA Köln,
 © VG Bild-Kunst,
 Bonn 2014

12 December 2014 to 22 March 2015

Dürer's Mysteries.

Riddles in his Graphic Œuvre

Albrecht Dürer not only achieved a hitherto unknown virtuosity in every single printing technique, but also established a large number of new visual genres that considerably increased the field of the visual arts. And yet these prints can rarely be assigned to a concrete subject. Evidently Dürer was inviting the viewers to open themselves to his mysteries and try their wits at interpreting them, then as now.

Heinrich-Böll-Platz,-50667 Cologne
 Tel.: +49 (0) 221 221 - 26165
 Fax: +49 (0) 221 221 - 24114
 info@museum-ludwig.de
 www.museum-ludwig.de

Tuesday to Sunday 10 a.m. – 6 p.m.
 first Thursday of the month 10 a.m. – 10 p.m.

Public tours: www.museum-ludwig.de
www.museenkoeln.de/museumsdienst

Train, bus, subway: Dom/Hauptbahnhof

Art of the 20th and 21st Century

Highlights of the collection:
[German Expressionism](#), [Russian Avant-garde](#), [Surrealism](#), [Picasso](#), [Pop Art](#),
[Contemporary Art \(1970s to the present\)](#),
[prints and photography](#).



Andrea Büttner, *Moss*, 2010–14, Series of photographs, dimensions variable, © Andrea Büttner / VG Bild-Kunst, Bonn 2014

5 September 2014 to 15 March 2015

Andrea Büttner 2

2 – the title is the agenda. The largest room in the museum is divided into two parts, one light and the other dark. In the dark space Andrea Büttner is showing her latest video installation, *Piano Destructions*.

Displayed in the center of the illuminated section of the exhibition is Kant's Critique of Judgment, which aims at linking „two aspects of philosophy,“ namely, theory and practice, “into a totality.” Here Büttner has chosen an unusual approach: she considers which concrete images the abstract thinker could have had in mind while writing. In doing so, she allows concepts to become sensual

and investigates the ways in which images influence our judgment and its criteria.

2 October 2014 to 11 January 2015
LUDWIG GOES POP

Thanks to Peter and Irene Ludwig, the Museum Ludwig in Cologne holds one of the internationally most significant collections of American Pop Art. In addition to the Cologne holdings, other parts of this collection are preserved at the mumok in Vienna, the Ludwig Forum in Aachen, and the Kunstmuseum Basel, as well as at the Ludwig museums in Budapest, Koblenz, St. Petersburg, and Beijing.

LUDWIG GOES POP brings together for the first time around 150 key works by the leading figures of this art movement as Andy Warhol, Roy Lichtenstein, James Rosenquist, Robert Rauschenberg and Jasper Johns from the above-mentioned museums and in the process expands the historical picture of this world-class private collection.

In the 1960s the “everyday” had arrived – it had made its way into art: in all manner of play, from humorously ironic to biting and critical, artists explored the Zeitgeist in their art, integrated fragments and quotes from the world of consumerism and advertising, comics, science, technology, erotic, and mass media.



Andy Warhol,
Close Cover before Striking
 (Pepsi Cola),
 1962 © 2014
 The Andy Warhol
 Foundation for
 the Visual Arts,
 Inc. / Artists
 Rights Society
 (ARS), New York
 Foto: Rheinisches
 Bildarchiv Köln

The exhibition offers an opportunity to comprehend Pop Art as an expression of a modern attitude toward life.

14 March to 5 July 2015

Sigmar Polke 1963-2010

The first large posthumous retrospective of Sigmar Polke's oeuvre, one of the most important artists of the post-war period, includes all media and techniques – painting, photography, film, drawings and sculptures – with which he worked. The exhibition is jointly organized by MoMa and the Tate Modern.

The Romano-Germanic Museum
 Roncalliplatz 4, 50667 Cologne
 Tel.: +49 (0) 221 221 24438 and 211 22304
 Fax: +49 (0) 221 221 24030
 roemisch-germanisches-museum@stadt-koeln.de
 www.museenkoeln.de

Tuesday to Sunday 10 a.m. - 5 p.m.
 first Thursday of the month 10 a.m. – 10 p.m.

Public tours: Sunday 11.30 a.m.
 See Museumsdienst (Educational service)
 for group guided tours
 Public tours in the exhibition 14 AD:
 Tuesday 3.30 p.m.

Train, bus, subway: Dom/Hauptbahnhof

European prehistory and prehistory of the Rhineland. History of Roman art, culture and urban settlements. Largest collection of Roman glass and pottery worldwide. European and German jewelry from classical antiquity and the migration period. Frankish finds from Cologne and the Rhineland.

until 19 October 2014

14 AD – Römische Herrschaft am Rhein – the Rhineland under Roman rule

When Augustus died in 14 AD, the news of his death spread like wildfire throughout the Roman Empire. The ancient classical world held its breath, the existence of the Roman Empire seemed to be seriously in danger. In parts of the Empire, imperial troops rebelled against Tiberius, Augustus' adoptive son and successor. There were uprisings along the provincial boundaries in the Rhineland, too. But the fears of the Imperial family were laid to rest. On the left bank of the Rhine, settlements and cities flourished under the protection of the professional Roman army. Using recent finds as examples, this exhibition provides an insight into civil and military life in the camps and newly established settlements in the era of Augustus. These include Nijmegen, Haltern, Xanten, Neuss, Trier, Cologne, Bonn and Mainz.

Planned for
 mid December 2014 to late March 2015
Discovery of sculptures in Berlin – the archaeology of the modern age

When archaeological excavations were carried out in connection with engineering works for the Berlin metro in 2010, Modernist sculptures emerged quite unexpectedly in front of Berlin's

“Rotes Rathaus” city hall. Classified as “degenerate art”, they had been removed from museums by the Nazis and were considered lost. The bronze sculptures by Edwin Scharff, Gustav Heinrich Wolff and Fritz Rampe, works in terracotta by Erny Roeder and Otto Freundlich and the cast stone figures by Milly Steger and Karel Niestrath, among other works, were confiscated by the Nazis and taken to a depot of the propaganda ministry at number 50 Königsstrasse. The building was destroyed in air raids – yet the sculptures have been preserved. The Berlin exhibition has already toured several cities in Germany where it attracted wide interest. The show opens a new chapter in the history of archaeology that is also attracting increasing attention among archaeologists in Cologne – the archaeology of the modern age. In recent years, excavations at different sites in Cologne brought to light finds from the late 19th and the 20th centuries. Many are from basements and cellars that were destroyed in World War II. A considerable number of finds are silent witnesses to the gruesome events of the nocturnal air raids. Others, like the recently discovered trove of Cologne carnival medals, reveal more humorous stories of their former owners. These finds thus complement in a special way the written documents of a particular time.



Erny Roeder, Pregnant Woman (1918), fragment of the head, Photo: Staatliche Museen zu Berlin/Achim Kleucker

Cultures of the World

Cäcilienstr 29-33, 50667 Cologne

Tel.: +49 (0) 221 221 31356

Fax: +49 (0) 221 221 31333

rjm@stadt-koeln.de, www.museenkoeln.de/rjm

Tuesday to Sunday 10 a.m. to 6 p.m.

Thursday 10 a.m. to 8 p.m.

first Thursday of the month 10 a.m. – 10 p.m.

Guided tours (in German): Wednesday 3 p.m.,

Saturday 3 p.m., Sunday 12 a.m. and 3 p.m.,

first Thursday of the month 5.30 p.m.

For group tours see Museumsdienst

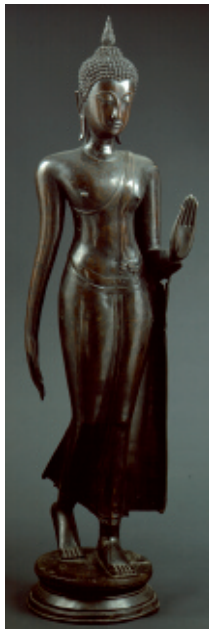
Information on current events:

www.museenkoeln.de/rjm/

Tram, bus, subway: Neumarkt

Parking directly beneath the museum: entrance to underground car park: Cäcilienstrasse.

The Rautenstrauch-Joest Museum – Cultures of the World (RJM) is the only ethnological museum in the state of North-Rhine Westphalia. On display is a high-quality selection of artefacts from its permanent collection of roughly 60,000 objects and 100,000 historic photographs from Oceania, Africa, Asia, America and Europe.



*Walking Buddha,
Thailand, South
East Asia, Sukhothai
period, 15th century
Photo: Rheinisches
Bildarchiv, Cologne*

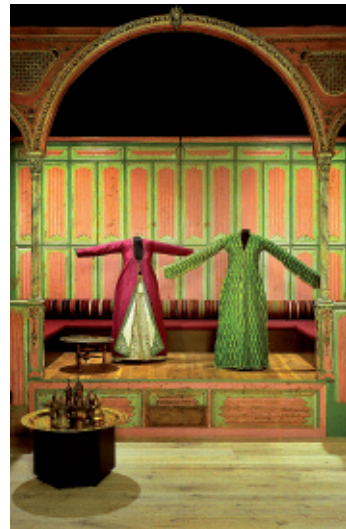
Theme-based presentation „People in Their Worlds“

The museum's innovative presentation concept on 3,600 m² invites visitors to embark on a multimedia, interactive journey of discovery. A rich and varied programme of events makes this museum a vibrant place of intercultural communication.

The presentation concept was awarded the Museum Prize of the European Council in 2012 – the Oscar of the world of museums. The concept does not follow the division into major geographical regions usual in comparable museums.

Instead it takes up themes which move people all over the world, but which they address in their own special way depending on regional and cultural influences.

The theme-based presentation "Comprehending the World" provides an insight into the European view of other cultures as reflected in travelogues, art and museums. The presentation "Shaping the World" takes a closer look at different ways of living. What does a Gamelan orchestra from Indonesia sound like? How do nomads survive in the desert? Comparing cultures to detect commonalities and differences is at the heart of this ethnological museum that is fun and makes you want to know more.



*Scenic View "Living Spaces – Ways of Living":
Turkey – Welcoming Guests Theme-based presentation
"People in Their Worlds"
Photo: Martin Claßen and Arno Jansen, Cologne*

Cäcilienstraße 29-33, 50667 Cologne
 Tel.: +49 (0) 221 221 22310
 Fax: +49 (0) 221 221 28489
 museum.schnuetgen@stadt-koeln.de
 www.museum-schnuetgen.de

Tuesday to Sunday 10 a.m. - 6 p.m.
 Thursday 10 a.m. - 8 p.m.
 first Thursday of the month 10 a.m. – 10 p.m.

Public tours Thursday 6 p.m.
 See Museumsdienst (Educational service) for
 group guided tours

Extended opening hours for the duration of
 the special exhibition: Tue to Sun 10 am to 7
 pm; Thu 10 am to 8 pm

For information updates go to:
 www.museum-schnuetgen.de

Tram, bus, subway: Neumarkt
 Carpark near to the museum Cäcilienstraße

Museum Schnütgen presents one of the most
 important collections of medieval art.
 Precious bronzes, goldsmith and ivory art,
 unique textiles, manuscripts, glass painting
 and sculptures from more than eight cen-
 turies are displayed in the Romanesque
 church of St Cecilia.



*Adoration of the
 Magi, northern
 Spain, c. 1120-50,
 Victoria and Albert
 Museum, London,
 © Victoria and
 Albert Museum,
 London*

25 October 2014 to 25 January 2015

The Magi – Legend, Art and Cult

On the occasion of the anniversary of the Three
 Magi shrine, the Museum Schnütgen will present
 a large-scale special exhibition with roughly 120
 unique works of art from around 70 museums in

Europe and the US. On display will be artistically
 outstanding works in ivory, sculptures, paintings,
 manuscripts and treasury art works from the 3rd
 century to the Renaissance, presenting original
 and interesting interpretations of the topos to
 visitors. Early Christian tombs, splendid liturgical
 manuscripts and medieval altarpieces empha-
 sise the religious importance of the Three Magi.
 The fascinating pull of the star, the Magi's gar-
 ments, their gifts and their journey are the leit-
 motifs of this exhibition. This show examines the
 emergence of the Maestà – the enthroned
 Madonna – as an iconic artistic formula and
 takes a closer look at the inclusion of donors and
 worldly rulers in works of art. A special section of
 the exhibition is devoted to the importance of the
 topic for Cologne.

The exhibition is supported by:
 RheinEnergie AG, Kölner Kulturstiftung der
 Kreissparkasse Köln, Sparkasse KölnBonn,
 Sparkassen-Kulturstiftung Rheinland, Peter und
 Irene Ludwig Stiftung, Sal. Oppenheim-Stiftung,
 Kulturstiftung der Länder, Kunststiftung NRW,
 Ernst von Siemens Stiftung, Ministerium für
 Familie, Kinder, Jugend, Kultur und Sport des
 Landes Nordrhein-Westfalen, RheinEnergie
 Stiftung Kultur, köln cuisine
 Media partners: Kölnische Rundschau, WDR 3



*Left wing of the Small Diptych with Adoration of the Magi
 and Crucifixion; school of the Duchy of Brabant or
 Luxemburg, c. 1360, Museo del Bargello, Florence;
 illustration with kind permission of the Italian Ministry of
 Culture, Cultural Activities and Tourism*

Museum of Applied Arts
 An der Rechtschule, 50667 Cologne
 Tel.: +49 (0) 221 221 23860, 221 26714
 Fax: +49 (0) 221 221 23885
 makk@stadt-koeln.de
 www.makk.de

Tuesday to Sunday 11 a.m. - 5 p.m.,
 first Sunday of the month 10 a.m. – 5 p.m.
 first Thursday of the month 11 a.m. – 10 p.m.

Public tours: Saturday, Sunday, Tuesday
 2.30 p.m., Wednesday 11 a.m.
 See Museumsdienst (Educational service)
 for group guided tours

Train, bus, subway: Dom/Hauptbahnhof

European arts and crafts from the Middle Ages to the 20th century focusing on furniture, ceramics, glass, textiles and fashion, jewellery and metal work, graphic art, painting and sculpture.
 "Kunst + Design im Dialog" - design and fine arts in the 20th and 21st centuries with a focus on European and North American artefacts.



BASILICA CATTEDRALE DI SAN GIORGIO FERRARA
 © Markus Brunetti 2014

until 14 December 2014

Markus Brunetti / **FACADES – cathedrals, churches and monasteries in Europe**

In 2005 the photographer Markus Brunetti embarked on a long journey to devote himself to his enthrallment with architecture. He is still on this journey, photographing the facades of cathedrals and churches from various different periods throughout Europe. He uses a very elaborate method to photograph the buildings and then subjects the images to a complex editing process which he developed himself. The granularity and

depth of focus of these images measuring up to 1.5 x 3 meters is captivating and their graphic quality is reminiscent of etchings by Old Masters. The pictures have a unique, atmospheric mood.

31 October to 23 November 2014

Cologne **DESIGN Award**

Presentation of the shortlisted exam works of design students on the occasion of this year's 5th "Kölner Design Preis" and "Kölner Design Preis International".

22 November 2014 to 19 April 2015

Cologne 1914. **Metropolis in the West**

To round off the events year "1914. Mitten in Europa", initiated by the regional authorities of the Rhineland, the Kölnisches Stadtmuseum (Museum of Cologne), the Museum of Applied Arts and the Rheinisch-Westfälisches Wirtschaftsarchiv foundation will be staging a joint exhibition. At its centre will be Cologne as a cosmopolitan city in the Rhineland on the eve of the First World War. The show at the MAKK and the Kölnisches Stadtmuseum complement each other to provide a comprehensive portrait of that particular period in Cologne, with each exhibition focusing on different aspects. The MAKK exhibition highlights the artistic and cultural trends in society at that point in time.



ESU (Eames Storage Unit) Regal und Schreibtisch,
 Ray und Charles Eames, Zeeland, USA 1949/52
 © Foto: Sasa Fuis Fotografie Köln

20 January to 7 June 2015

SYSTEM DESIGN

Over 100 years of chaos in everyday life

Systems determine our everyday life. Most of the time we are not aware of them. Our modern world is full of systems that compete with each other. The system concept has left its mark on design for more than 100 years. Design oscillates between system and chaos. This show presents exhibits from Europe, the US and Latin America to highlight the ideals, hopes and aims, the limits, the failures and the future of the system concept from c. 1880 to the present day.

Museum of East Asian Art
 Universitätsstr. 100, 50674 Cologne
 Tel.: +49 (0) 221 221 28608
 Fax: +49 (0) 221 221 28610
 mok@museenkoeln.de

Tuesday to Sunday 11 a.m. – 5 p.m.
 first Thursday of the month 11 a.m. – 10 p.m.

Public tours: Sunday 12 p.m.
 See Museumsdienst (Educational service)
 for group guided tours

Tram 1 and 7 to Universitätsstraße

Information: www.museenkoeln.de

Buddhist sculpture, collection of Chinese ritual bronzes from the 15th to the 3rd century BC. Collection of East Asian ceramics. Japanese screens and Japanese lacquer work. Chinese and Japanese painting from the 13/14th centuries to the modern period. Colour woodblock prints from the 17th to the 20th century. Classical Chinese furniture from the 16th and 17th centuries.



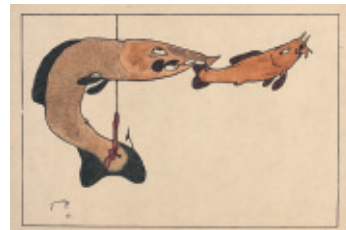
Paul Klee, 'And, alas, what makes my sorrow even much more bitter is that you may not even suspect what my heart feels like'; 1916, 22; after the translation of a Chinese poem by Wang Sengyou (5th c. AD), water colour and ink on paper on cardboard; Zentrum Paul Klee, Berne

18 October 2014 to 1 February 2015

From Japonisme to Zen: Paul Klee and the Far East

The Swiss German artist Paul Klee (1879-1940) counts among the most noteworthy and versatile artists of the 20th century. His bold, individualist style is related to European expressionism, cubism as well as primitivism. At the beginning of the 20th century he was introduced to original works of East Asian art probably by Wassily

Kandinsky and the artists of the Blaue Reiter. These new impulses aroused his interest in Far Eastern art to a degree that far exceeded the then fashionable phenomenon of Japonisme. Paul Klee's study of East Asian, and particularly Japanese art and culture, exemplifies his attitude of openness and intellectual curiosity. Up until now, this aspect of his oeuvre, which is evident from his reception of Japanese and Chinese art, literature, poetry as well as Daoism and Zen-



Paul Klee, untitled (two fish, one on a hook), 1901, pen and ink and watercolour on card, private collection, Switzerland, Depositum im Zentrum Paul Klee, Bern

Buddhism, has never been coherently analyzed. The exhibition was organized by the Zentrum Paul Klee, Bern, in cooperation with the Museum für Ostasiatische Kunst, Cologne. It shows that East Asian art is in fact an integral part of Klee's oeuvre.

In addition, the exhibition includes works by seven contemporary Japanese artists which show the influence of Paul Klee on Japan's art today.

Zeughausstr. 1-3, 50667 Cologne
 Tel.: +49 (0) 221 221 22398
 Fax: +49 (0) 221 221 24154
 ksm@museenkoeln.de
 www.museenkoeln.de

Tuesday 10 a.m. – 8 p.m.
 Wednesday to Sunday 10 a.m. – 5 p.m.
 first Thursday of the month 10 a.m. – 10 p.m.
 Open on 13, 14 and 17 February (carnival)

Public tours: Saturday 2.30 p.m.,
 Sunday 11.15 a.m.,
 first Thursday of the month 6 and 7.30 p.m.
 See Museumsdienst (Educational service)
 for group guided tours

Subway: Appellhofplatz/Zeughaus

[History of the City of Cologne from the Middle Ages to the present.](#)

[until 5 October](#)

Cologne in Unholy Times The City During the Thirty Years' War

"Holy Cologne" during the unholy times of the Thirty Years' War – when that left its mark on whole Europe in 17th century, Cologne as one of the greatest cities of the German Empire was an important economic, cultural and intellectual centre. It is for the first time, that the Cologne City Museum presents this tumultuous period in European history and the role of Cologne in a multi-faceted exhibition.

[22 November 2014 to 19 April 2015](#)

Cologne 1914 – Metropolis of the West

At the end of the exhibition cycle dedicated by the „Landschaftsverband Rheinland“ in 2014 to the theme "1914 – in the centre of Europe", the Cologne City Museum, the Museum of Applied Arts Cologne and the Foundation Rhenish-Westphalian Business Archive present a joint venture exhibition with the focus on Cologne as the metropolis of the Rhineland at the eve of World War I. Since the 1880s Cologne had developed into a modern, culturally vibrant city. The antagonizing impulses of the era „aggression“ versus „avant-garde“ collided in Cologne like in no other city in the Rhineland. The exhibition presents the abrupt changes in everyday life, urban develop-



Cologne children posing as soldier and nurse in May 1915 – © Kölnisches Stadtmuseum/ Rheinisches Bildarchiv

ment, as well as in economics, politics and religion. Individual fates of inhabitants of the city highlight the massive impact that the war had not only on combatants, but also on everywoman and everyman.

Small KUBUS exhibitions
 (in the permanent exhibition)

[until 9 November 2014](#)

Misfits in Paradise – International Individuals of the World. In the Studio Annette Frick

The term „the international individual of the world“

was coined by Richard Wagner in 1870, meaning to mock the international successful Cologne composer Jacques Offenbach who was then living in Paris. „Surely a good chance to bring to light some of the photographic treasures from my time in Cologne“, Annette Frick explains in regard to her KUBUS exhibition, presented on the occasion of the „Internationale Photoszene Köln“.

[12 December 2014 to 7 May 2015](#)

Jupp Lückeroth (1919-1993) The Donation Schlagloth

Since 1951 the Cologne artist studied the holistic approach to the world as mental foundation of his "Informel" painting method. In the 1950s his art was characterized by „Tachism(e)“, a form of abstract expressionism; henceforth the wave as an archaic icon dominated his work.

[30 January to 7 May 2015](#)

From our Carnival Treasure Trove

The „Friends and Sponsors of Cologne Folklore Association“, who for decades have been donating objects to the Cologne City Museum to promote the knowledge of and research into Cologne customs, present their work.

NS-Documentation Centre
 Appellhofplatz 23-25, 50667 Cologne
 Tel.: +49 (0) 221 221 26332
 Fax: +49 (0) 221 221 25512
 nsdok@stadt-koeln.de, www.nsdok.de

Tuesday to Friday 10 a.m. – 6 p.m.,
 Saturday, Sunday and regular holiday
 11 a.m. – 6 p.m.
 first Thursday of the month 10 a.m. – 10 p.m.
 Library: Tuesday, Wednesday 10 a.m. – 4 p.m.
 Thursday 10 a.m. – 6 p.m.,
 Friday 10 a.m. – 1 p.m.

Guided tour: by prior arrangement
 Tel. +49/ 221 / 221-26331. Available in English,
 French, Italian, Polish and Spanish.
 Guided tour free of charge first Saturday in the
 month at 2 p.m. Prior registration not required
 Audio Guide € 2 (German, English, French,
 Hebrew, Dutch, Polish, Russian, Spanish)

Subway: Appellhofplatz, exit: Schwalbengasse

Gestapo Prison Memorial: former Gestapo
 prison with the detention wing and the graffiti
 of the prisoners. Permanent exhibition
 “Cologne during National Socialism”
 Changing special exhibitions, Library



© Boris Lurie Art Foundation

until 2 November 2014

**KZ – Kampf – Kunst – art as a weapon in the
 concentration camps**

Boris Lurie: No! Art

Born 1924 in Leningrad, Boris Lurie grew up in Riga, survived life in the ghetto and several concentration camps, and found in his art a way to escape the silence of the victims. NO! became his life motto. Lurie was the central figure in the NO!ART movement that was founded in New York in 1959 and dealt critically with consumerism, cold war and the arms race. This show includes Lurie's most important artistic stages, ranging from the drawings and oil paintings created shortly after his liberation from the concentration camp to pictures and sculptures of the NO!ART movement. This comprehensive exhibition is the first of

its kind in Germany and will be presented in collaboration with the Boris Lurie Foundation.

21 November 2014 to 15 March 2015

**Ein Planet namens Auschwitz –
 Planet Auschwitz**

Topography and everyday life in a concentration and extermination camp
 Only a few buildings remain of the architectural complex of the concentration and extermination camp at Auschwitz which has come to epitomise the Holocaust. While the stone buildings of the main camp at Auschwitz are now at the heart of the memorial site and museum, only a few reconstructed huts remain of the extermination camp at Auschwitz-Birkenau and the labour camp at Auschwitz-Monowitz.

For the first time worldwide, the NS-DOK will present a visual topography of the main camp, and the extermination and labour camps. The architectural drawings of site measuring and reconstruction works, as well as technical details and numerous drawings in perspective provide an insight into the technocratic organisation and execution of the mass extermination of people. This exhibition contrasts the unemotional technical drawings with images created by prisoners, thus evoking a poignant picture of the inhuman everyday life in the camps – from the arrival of



© Peter Siebers

the deportation trains, the selection process and the inhuman living conditions, to the murder of the internees.

An exhibition by the NS-Dokumentationszentrum of the City of Cologne in collaboration with Professor Gideon Greif (Tel Aviv), the Cologne construction draughtsman Peter Siebers and the memorial site and museum of Auschwitz-Birkenau.

Postal Address Administration:
 Archäologische Zone
 Heumarkt 64-66, 50667 Köln
 Tel. +49 (0) 221 221 33422
 Fax +49 (0) 221 221 33420
 www.museenkoeln.de/archaeologische-zone
 CCAA@stadt-koeln.de

Praetorium
 Kleine Budengasse 2, 50667 Köln
 Tel. +49 (0) 221 221 22394
 Tuesdays to Sundays 10 a.m. – 5 p.m.
 first Thursday of the month 10 a.m. – 10 p.m.

Admission: 3,50 / 3,- €

Mikwe
 Unter Goldschmied, 50667 Köln
 Closed at present

Ubirmonument
 An der Malzmühle 1, 50667 Köln
 Closed at present



Archaeological Zone © City of Cologne

Archäologische Zone

One of the most spectacular cultural projects in Cologne is gradually taking shape – the Archäologische Zone beneath the Rathausplatz. The City of Cologne and the Land North-Rhine Westphalia are erecting a new subterranean museum with an area of roughly 7,000 m². Visitors to the museum will encounter monuments from two millennia in

their original locations. From the imposing ruins of the Roman governor's palace to the fragile remains of one of the most important Jewish urban quarters in Europe, the secular heart of the history of the city of Cologne will be presented here. The excavation site on the Rathausplatz already provides visitors with a profound insight into the city's past.

Am Hof 50, 50667 Cologne
 Tel.: +49 (0) 221 221 22332
 Fax: +49 (0) 221 221 23265

Tuesday to Friday 1 p.m. – 7 p.m.
 Saturday 1 p.m. – 4 p.m.

The artothek not only offers the opportunity to hire international works of contemporary art from its collection – it also hosts exhibitions by Cologne artists and international guest artists. It is located in Haus Saaleck, a late-Gothic patrician house from the 15th century in the vicinity of the cathedral and the major museums.

4 September to 25 October 2014

Dan Dryer / Horizont
 Raum/Preis der Freunde der artothek Köln

6 November to 20 December 2014
 Förderstipendien der Stadt Köln 2014

15 January to 21 February 2015
 Jugoslav Mitevski

5 March to 25 April 2015
 Julia Bünnagel

Kolumba
 Art Museum of the Archbishopric of Cologne
 Kolumbastrasse 4, 50667 Köln
 Open daily except Tuesdays 12 p.m. to 5 p.m.

www.kolumba.de

Tel.: + 49 (0) 221 933193-0
 Fax: + 49 (0) 221 933193-33
 Guided tour, bookings by telephone:
 +49 (0) 221 933193-32 (mo-fr 10 a.m. -12 p.m.)
 mail@kolumba.de

Admission:
 up to the age of 18: free admission
 adults: 5 € (concession: 3 €)
 no group concessions
 Annual ticket 20 €

The collection ranges from late antiquity to the present day, from Romanesque sculpture to spatial installations, from medieval panel painting to "radical painting", from Gothic ciborium to articles of everyday use from the twentieth century. The search for an overarching order, based on measure, proportion and beauty is the linking element in artistic design and the guiding principle.



Manos Tsangaris; from the *Zeitsprung* (time leap) series, 1997

15 September 2014 to 24 August 2015

playing by heart

annual exhibition from the permanent collection

In 1965, the Second Vatican Council ended with the pastoral constitution of the church in today's world, *Gaudium et Spes* (joy and hope). To date, this important document of the Council has represented the will of the church to renew itself (ital. *aggiornamento*). Since the era of Classical Modernism and up to the present day, there has been, in the world of art, a one-sided identification of Christian topics with the great themes of the Passion – fear, pain, death, mourning and loss are the leitmotifs in their artistic expression. This exhibition, by contrast, takes an in-depth look at the two key concepts that made up the title of the constitution and embarks on a quest for the counter-images to pain: awakening, the here-and-now, happiness, creativity, play, utopia, vitality – these are some of the key words, along with cheerfulness, humour and wit. The title *playing by heart* is a reference to the feeling of bliss that often comes with the appropriation of a piece of music. This experience of bliss is something that literally



comes from "playing by and through one's heart". This exhibition stages the various aspects of these themes by creating individual, distinctive spaces using works from Kolumba's permanent collection, some of which have been acquired in recent years and will be displayed for the first time. One of the focal points will be the works of the Cologne painter Michael Buthe (d. 1994) in commemoration of the 70th anniversary of his birth.

The works on display range from the early Middle Ages to the present day. Artists include Georg Baumgarten, Heinz Breloh, Michael Buthe, Roni Horn, Esther Kläs, Robert Klümpen, Bernhard Leitner, Stefan Lochner, Hartmut Neumann, Jürgen Paatz, Peter Tollens, Manos Tsangaris, Richard Tuttle.

Cathedral Treasure vault
 Domschatzkammer des Metropolitantkapitels
 der Hohen Domkirche
 Domkloster 4, 50667 Cologne
 Tel.: (administration) +49 (0) 221 17940-300
 (box office) +49 (0) 221 17940-530
 Fax: +49 (0) 221 17940-399
 www.domschatzkammer-koeln.de
 info@domschatzkammer-koeln.de

opening hours daily 10 a.m. to 6 p.m.

Admission: 5 € / concessions 2,50 €
 Family ticket 10 €

guided tour: Thursday 3 p.m.
 guided tours for groups by arrangement
 info@domfuehrungen-koeln.de
 appointments: Monday to Friday 10 a.m. to
 1 p.m. and 2 p.m. to 4 p.m.
 Tel.: +49/ 221 17940-303
 cathedral shop (entrance area)

Christian art from the 4th to the 20th century
 Works of ecclesiastical art in gold, silver,
 bronze and ivory. Reliquaries, liturgical instru-
 ments and textiles, insignia of the archbishops
 and priests, medieval sculptures and
 Franconian grave finds.



*Ptolemaic cameo, originally from the shrine of the Three Magi.
 Photo: Vienna Kunsthistorisches Museum (on display until 18-11-2014)*

until 25 January 2015

Kaspar, Melchior, Balthasar

**850 years of veneration of the Magi in Cologne
 Cathedral**

The 23rd of July 2014 marks the 850th anniversary of the translation of the relics of the Magi to Cologne. On the occasion of this anniversary, this exhibition will put Cologne Cathedral at the centre of the veneration of the Magi in Europe. At two venues within the Cathedral – the Hubertuskapelle and the Domschatzkammer (treasury) – the cult of the Magi will be examined from the points of view of history and art. The various different locations of the shrine of the Magi in the Cathedral are at the heart of the exhibition in the Hubertuskapelle. For this occasion, the back of the Baroque mausoleum of the Magi will return to the Cathedral. In addition, a selection of works from the Magi collection of the Dombauarchiv (archives of the Cathedral workshop) will illustrate the unbroken popularity of the Magi and the associated traditions surrounding their veneration.

The shrine of the Magi will be at the centre of the exhibition in the treasury. Alongside the trapezoidal lid there will be outstanding 12th and 13th century gold works from the Rhine-Meuse area which are closely connected stylistically to the shrine of the Magi and its creator, Nicolas de Verdun.

Käthe Kollwitz Museum Cologne
Sponsor Kreissparkasse Köln
Neumarkt 18-24, 50667 Köln
Tel.: +49 (0) 221 227 2899 or 227 2602
Fax: +49 (0) 221 227 3762
www.kollwitz.de
museum@kollwitz.de

open:
Tuesday to Friday 10 a.m. to 6 p.m., Saturday,
Sunday and public holidays 11 a.m. to 6 p.m.
closed Monday

Public guided tours: Sundays 3 p.m.,
Thursdays 5 p.m. and by arrangement

U-Bahn/Strassenbahn (underground/tram):
Neumarkt

Admission: 4 € / concession 2 €
Annual ticket 16 €

Worldwide most important collection
of works by Käthe Kollwitz (1867-1945):
Drawings from all her creative periods
Prints, all the cycles, important individual
works, all the posters, Complete collection of
her bronze sculptures.



Albert Hennig, builders on a roof, 1932-1933,
Kunstsammlungen Zwickau, Max Pechstein Museum

until 12 October 2014

Das Auge des Arbeiters – the Eye of the Worker. Working class photography from around 1930

In cooperation with the Institut für Sächsische Geschichte und Volkskunde e.V. in Dresden. This exhibition provides an insight into everyday

life and working class culture in the 1920s and 1930s. Alongside pictures by proletarian amateurs, this show will present aesthetically sophisticated art photography by Walter Ballhause and Albert Hennig, and John Heartfield's political photo montages. By looking at the world from a "grassroots perspective", they paint a very special portrait of society from the Weimar Republic to the war years.

17 October 2014 to 11 January 2015

Apokalypsen – Daheim und im Feld Apocalypses – at home and in the trenches Käthe Kollwitz and the German Expressionists in the First World War

2014 sees the anniversary of the beginning of the First World War. This event coincides with the 100th anniversary of Käthe Kollwitz' younger son's death. Peter Kollwitz fell in Flanders as a volunteer at the age of 18 on 22 October 1914. On this occasion the Käthe Kollwitz Museum Köln will be presenting a special exhibition with over 80 works on loan which highlight how the German Expressionists dealt with the First World War. The artistically processed frontline experience of these male artists is contrasted with the position of Käthe Kollwitz as a civilian and a soldier's mother, and will include a documentary on the creation of the memorial "The Mourning Parents".



Karin Kneffel, dog on a blue rag, 2015, lithograph in five colours, © VG Bild-Kunst, Bonn 2014

16 January to 12 April 2015

Karin Kneffel – Fallstudien. Case Studies Watercolours, prints, paintings

The works of Karin Kneffel, a pupil of Richter and professor at the Munich Academy, play with the power of illusion in painting. Everyday motifs such as fruit, carpets, armchairs and animals are depicted in her watercolours, etchings and paintings with painstaking precision and technical sophistication. The artist captures moments in time, enlarges details, breaks up perspectives and charges mirror images with a life of their own. She does not show what we see, but how we see it.

Schokoladenmuseum Köln
 Am Schokoladenmuseum 1a, 50678 Köln
 Tel (+49 221) 931 888 0
 Fax (+49 221) 931 888 14
 service@schokoladenmuseum.de
 www.schokoladenmuseum.de

Tue to Fri 10 am to 6 pm
 Sat, Sun and public holidays 11 am to 7 pm

Admission: 9 €; concession: 6,50 €
 Groups and school classes are advised to book in advance.

Guided tours: public guided tours Sat and Sun (for details see information board in the museum) and on request (pre-booking required)

Tram, bus, underground: Heumarkt, Severinsbrücke, Schokoladenmuseum
 Wheelchair access to the museum
 Underground car park: Rheinauhafen

The chocolate museum with its exhibition space over three floors takes visitors on a sweet journey in time through 4000 years of the cultural history of chocolate – from the production of cocoa in the tropics to the glass chocolate factory in the museum.



1 November 2014 to 6 January 2015
Sweet splendour of the sacred shrine – the shrine of the Three Magi rendered in chocolate

The Dom, Cologne's landmark cathedral, has long been available in chocolate. The shrine of the Magi, however, which is at the root of the cathedral's fame, has until now not been available as a sweet treat. However, on the occasion of the 850th anniversary of the relics' arrival in the city this summer, the Schokoladenmuseum has – in conjunction

with Berlin artist Sonja Althäuser – developed a chocolate version of the shrine. The chocolate shrine will be unveiled on All Saints' Day, the 1st of November, and will be on display next to the chocolate fountain until Epiphany – the Three Saints' Day. The presentation will be complemented by a wide range of fringe events. For more details on this accompanying programme visit our website at www.schokoladenmuseum.de. The highlight of the exhibition will be the Bohnenfest – the feast of the bean king – on the eve of Epiphany.

26 November 2014 to 4 January 2015
Father Frost and the Christ Child celebrate Christmas –

Eastern European chocolate wrappings from the Stanislav Kramsky Collection

This exhibition explores the differences in customs surrounding the celebration of Christmas in Eastern and Western Europe in the 20th century by taking a closer look at historical Christmas gift wrappings. Elaborately designed chocolate wrappings were something very special in Eastern Europe. The impressive Stanislav Krámský exhibition focuses on the figure of "Father Frost" in the East and contrasts him with St. Nicolas in the West.

19 January to 15 March 2015
fruchtARTig

Paintings and sculpture by Bernd Schartmann

Bernd Schartmann, an artist from the West German city of Aachen, worked as a food chemist at the Lindt chocolate factory in the same city. Even then, careful observation was the most important thing for him. Today, he has adopted this principle in his role as an artist. This exhibition – fruchtARTig – shows fruit, strongly magnified, that capture the viewer's imagination and open up perspectives that lead from detail to infinity.

*a pun on the German word "fruchtartig" – fruit-like – and the English word "art".

Im Mediapark 7, 50670 Köln
 Information: monday to friday 2 p.m. to 6 p.m.
 Tel: (+49) (0) 221 888 95 0
 Fax: (+49) (0) 221 888 95 101
 pr@sk-kultur.de
 www.sk-kultur.de
 Exhibition open daily from 2 p.m. to 7 p.m.,
 closed Wednesdays
 Admission: 4.50 € (concession: 2 €)
 Mondays admission free

19 September 2014 to 8 February 2015

Jim Dine – My Tools

An exhibition organised by the Photographische Sammlung/SK Stiftung Kultur in collaboration with the artist.

Tools are an important leitmotif in the work of Jim Dine. Since the 1960s, the artist has been dealing with this topic in a variety of ways and artistic means. The large-scale photographs that are on display in the Jim Dine – My Tools exhibition were created between 2001 and 2013. They convey an idea of Dine's individualistic view of his repertoire of motifs – hammers, pliers, drills, strings and shovels, alienated by the use of colour, shapes and combinations with various different elements. It all looks very concrete and life-like, yet at the same time enigmatic and symbolical. In their role as important implements in the creative process,



Jim Dine: Wrenches, 2004

© Jim Dine; VG Bild-Kunst, Bonn, 2014

these tools and mundane objects are everyday companions as well as emotionally and aesthetically captivating objects for the artist. In that latter role, they inspire Jim Dine again and again – to create new works of art, and to document visually those moments that the artist has actually experienced, captured in photographs that provide a poetic documentary space for chance and coincidence.

“Jim Dine – My Tools” is the third solo exhibition at the Photographische Sammlung/SK Stiftung Kultur which stewards a large collection of heliographs, black-and-white and colour photographs by Jim Dine.

Deutsches Tanzarchiv Köln
 (German Dance Archive, Cologne)
 Archives, library and videotheque open
 Tuesdays 10 a.m. to 7 p.m., Wednesdays and
 Thursdays 10 a.m. to 4 p.m. – provide an
 opportunity to acquire more information on
 dance.

Tanzmuseum

3 October 2014 to 9 August 2015

Faltenwurf und Walzerschritt

(of the fall of folds and waltz steps)

Dance and fashion through the ages

Hardly any other form of art and expression is as close to the pulse of time as dance. A traditional popular rhyme talks about the “Rhythmus, wo ein jeder mitmuss” – a rhythm that carries everybody along. Everyone knows that this rhyme is also always a reference to the particular dance that is all the rage at any given time, be it a waltz or a tango.

Dance creates fashion – the stage costumes of dancers have always reflected the link to the zeitgeist of a given period. More often than not, the dance and the costumes were ahead of the times, like for instance the tutu of classic ballerinas which, in the 19th century, formed the greatest contrast imaginable to the demure everyday fashion of the Biedermeier period that shrouded

*Tanagra figurine
 of a dancing woman;
 terracotta, 2th century BC
 Collection of the Deutsches
 Tanzarchiv Köln/SK Stiftung
 Kultur*



the entire body. Another example are the dance costumes worn by Isadora Duncan at the beginning of the 20th century which conveyed the idea of a liberated “dance of the future” and also gave momentum to the reform of female fashion.

The Deutsches Tanzarchiv Köln traces the inter-relationship between dance and fashion. At the centre of the show is the costume collection of the Deutsches Tanzarchiv which comprises 700 individual items and other exhibits from the archive's rich collection.

Fringe events:

www.sk-kultur.de/tanz/tanzmuseum/veranstaltung
 Guided tours for day nurseries and schools on request and by notification
 e-mail: tanzarchiv@sk-kultur.de

German Sports and Olympic Museum
Im Zollhafen 1, 50678 Cologne
Tel.: +49 (0) 221 33609-0
Fax: +49 (0) 221 33609-99
info@sportmuseum.de
www.sportmuseum.de

Tuesday to Friday 10 a.m. - 6 p.m.,
Saturday and Sunday 11 a.m. - 7 p.m.,

Admission: 6 €/ Concession: 3 €
There is no longer a group concession

guided tours on request
Public tours: please ask for schedule.

Subway, tram, bus: Heumarkt, Severinstraße
The museum is accessible by wheelchair.

Collection illustrating the national, international, and Olympic history of sports, with special emphasis on the 19th century till today: clothing, sports and game equipment, medals, certificates, sport awards, art posters and objects, graphic works, photographs, and other documents; Kölner Sportarchiv, Deutsches Basketball-Archiv, Heinz-Loosen-Archiv (collection on rowing)



canoe racing, picture alliance

4 to 28 September 2014

Wasserfest – a celebration of 100 years of canoeing

It is difficult to summarise the fascination of canoeing in just a few words. This sport ranges from relaxed roaming in the countryside to tough competitions along artificial white-water channels. The German Canoeing Association DKV was founded in 1914 and has grown to become the biggest canoeing organisation worldwide. On the occasion of its 100th anniversary the DSOM will present the *Wasserfest* exhibition in conjunction with the DKV.

Numerous original exhibits, films, interactive points, and banners with texts and images will show the history and the diverse fields of activity of this association which brings together people with a passion for canoeing.

5 December 2014 to 1 February 2015

Ballwechsel – passing the ball Photographs by Klaus Wohlmann

Two motorbikes, three African countries and a lot of footballs – these are the ingredients for Cologne photographer Klaus Wohlmann's project *Ballwechsel* which he embarked on in January 2014. *Ballwechsel* builds on Wohlmann's previous exhibition in which visitors to the museum were encouraged to donate footballs. He managed to



passing the ball, Klaus Wohlmann

collect 90 balls, many of them with colourful designs and tagged with photos and personal messages. The German Foreign Office sent them to German embassies in Gabon, Cameroon and the Republic of Congo, where Wohlmann collected the balls and distributed them in person to families and village communities. From a communicative point of view, the project was a great success. Wohlmann summed it up by stating that thanks to the footballs their contact with people was much closer. It goes without saying that Wohlmann used the opportunity for a photographic documentation.

with the Bruno-Uhl-Bibliothek der Deutschen Gesellschaft für Photographie (DGPh)
 Office: Kattenbug 18-24, 50667 Cologne
 Tel.: +49 (0) 221 221 22388 and 221 24171
 Fax: +49 (0) 221 221 22210
 kmb@stadt-koeln.de
 Online-Katalog (OPAC):
 www.museenkoeln.de/kmb/katalog

The City of Cologne's Kunst- und Museumsbibliothek is both the academic working library of the museums and the city's public art library. It houses a wide collection of books on art from the middle ages to the present day. The focal points of the collection "Art from the Benelux countries", "20th and 21st century fine arts" and "The visual achievements of photography and film" are supported by the "Deutsche Forschungsgemeinschaft". The latter is supplemented by the Bruno-Uhl-Bibliothek der Deutschen Gesellschaft für Photographie" and the "Agfa-Photo-Historama" library.

Reading room I
 with books on the fine arts from the middle ages until the present day, in the Museum Ludwig, Heinrich-Böll-Platz, 50667 Cologne
 Tel.: +49 (0) 221 221 22626
 Fax: +49 (0) 221 221 22315

Tuesdays to Thursdays 10 a.m. to 9 p.m.,
 Fridays 10 a.m. to 6 p.m.
 every other Saturday from 11 a.m. to 4 p.m.

Reading room II
 with books on applied art and the photo library in the Museum of Applied Arts, An der Rechtschule, 50667 Cologne
 Tel.: +49 (0) 221 221 26729 and 221 23394

Tuesdays to Fridays 11 a.m. to 5 p.m.

27 September to 11 November 2014
 Rolf Steiner

15 November 2014 to 18 January 2015
 Mic Enneper

24 January to 8 March 2015
 Astrid Karuna Feuser

Photo-Investigation/Marburger Index:
 Museum of Applied Arts,
 Reading room II:
 An der Rechtschule, 50667 Cologne
 Tel.: +49 (0) 221 221 26713

Tuesdays to Fridays 11 a.m. – 5 p.m.,
 (Information 11 a.m. – 2.30 p.m.)
 Underground station: Dom/Hauptbahnhof

Address/Order:
 Rheinisches Bildarchiv
 Kattenbug 18 - 24, 50667 Cologne
 Tel.: +49 (0) 221 221 22354
 Fax: +49 (0) 221 221 22296
 rba@rbakoeln.de
 www.museenkoeln.de/rheinisches-bildarchiv

The Rheinisches Bildarchiv presents in about 750.000 black and white- and about 25.000 coloured photos the artistic heritage of the museums of Cologne as well as the general art- and cultured history of Cologne and the Rhineland. The archive holds in addition components of August Sander, August Kreyenkamp, Karl Hugo Schmölg, Chargesheimer and other photographers. Black and white-prints are charged upon delivery. Coloured photos are on loan.



www.rheinisches-bildarchiv.de
www.kulturelles-erbe-koeln.de
www.facebook.com/pages/Rheinisches-Bildarchiv/409546452429587

Museumsdienst Köln

Leonhard-Tietz-Straße 10, 50676 Köln

Tel.: +49 (0) 221 221-24764

Overall programme and Newsletter:

www.museenkoeln.de/museumsdienst

Coordination and Bookings

service.museumsdienst@stadt-koeln.de

T.: +49 (0) 221 221-23468, 221-27380, 221-24077

Fax: +49 221 221-24544

The Museumdienst organises the programme of the Cologne museums. It presents art and culture, permanent collections and special exhibitions for children, young people and adults, for individual visitors, groups and school parties. It also organises guided tours, courses and events in German, English, French, Italian, Dutch, Spanish and Turkish.

We organise the programme...

For everyone

Guided tours for individual visitors and groups – as a public event or with a reservation

For children and their parents

A guided tour for families every Sunday, and special programmes in the school holidays



Young artists designing lanterns with Wild Men (for the exhibition on prophets at Museum Schnütgen)

© Karin Rottmann, Museumsdienst Köln

For the creative

MuseumKinderZeit for children from 5 onwards, always on a Saturday
Art studio in the AkademieProgramm (art academy programme)

For senior citizens

Museums at a leisurely pace – always on a Thursday at 3 pm

For working people

Culture during the lunch break and after work

For the handicapped

Experiencing with all the senses

For birthdays

Avoid the stress – a celebration with a difference!

For special occasions

Museums with your own selected guests

For companies

Ambiance and a special programme as an experience both for company employees and clients

For schools

Our programme caters for all age groups and school types. Whether class discussion, workshop or several hours of instruction at the museum, the range of events demonstrates how relevant museums can be.

Programme of guided tours

We offer more than 100 themes for guided tours, as a means of general orientation or within the framework of more specialised instruction. As a rule the guided tours last 75 min. and can also be conducted in foreign languages.

Workshops for schoolchildren

Our programme of workshops backs up and complements guided tours in the museums by means of practical, creative work. Workshops include a guided tour to view original paintings and a practical creative part in the museum workshops.

Our digital newsletter "Schulen im Museum" provides information on current programmes.

For teachers

Seminars for teachers are intended to prepare for museum visits with school parties and the presentation of new teaching materials. Works of art and historical documents are interpreted in a dialogue relevant to classroom teaching. In this way we bring together culture and current educational developments. In future we will provide information on our seminars for teachers by email.

Museumsschule (museum school)

The teachers of the Museum School plan and give lessons and school projects in the Cologne museums.

Tel.: +49 (0) 221 221-22339, -24080, -23709

Akademieprogramm

More intensive access to the museums to provide greater insight. A programme that goes beyond the usual guided tours, events for all those who experience art and culture as an adventure - for curious, reflective, creative people open to new intellectual, psychological and sensual experience.

The AkademieProgramm offers intensive access to the Cologne museums. Stimulating events, glimpses behind the scene, exciting juxtaposition of different genres, encounters with other cultures and epochs, workshops for personal creativity.

The municipal museums are closed on 24, 25 and 31 December 2014, on 1st of January 2015 as well as from 12 to 17 February 2015 (carnival). Except the Kölnisches Stadtmuseum: open on 13, 14 and 17 February 2015

Admission fees: Museum Ludwig (valid for the permanent collection and all special exhibitions) 11/7,50 €, Familienticket 22 €, Wallraf-Richartz-Museum & Fondation Corboud 8/4,50 €, Römisch-Germanisches Museum, Museum für Angewandte Kunst, Museum für Ostasiatische Kunst, Museum Schnütgen 6/3,50 €, Kölnisches Stadtmuseum 5/3 €, NS-Dokumentationszentrum 4,50/2 €, Rautenstrauch-Joest-Museum 6/3,50 €. Kombiticket Rautenstrauch-Joest-Museum/Museum Schnütgen 10/7 € Does not apply to special exhibitions, where the admission fees may vary.

Admission for students aged 18 or younger to the collections of the museums of the City of Cologne is free

MuseumsCard: The MuseumsCard is valid on two consecutive opening days for all above mentioned museums. It allows to travel around for free on all buses and trams within the „city zone“. Price for a single person: 18 €, for a family of two adults and two children under 18 years: 30 €. Available at all museums and at the public transport ticket stalls.

Published by Stadt Köln - Der Oberbürgermeister - Museumsdienst, Richartzstr. 2-4, 50667 Cologne, Editor: Waltraud Herz, M.-L. Höfling, Tel.: +49/ 221 / 221-24033 / 22334, Fax.: +49/ 221 / 221-24164, museen@stadt-koeln.de, Translated from German by Ulrich Boltz, Brighton All information subject to change without notice.

